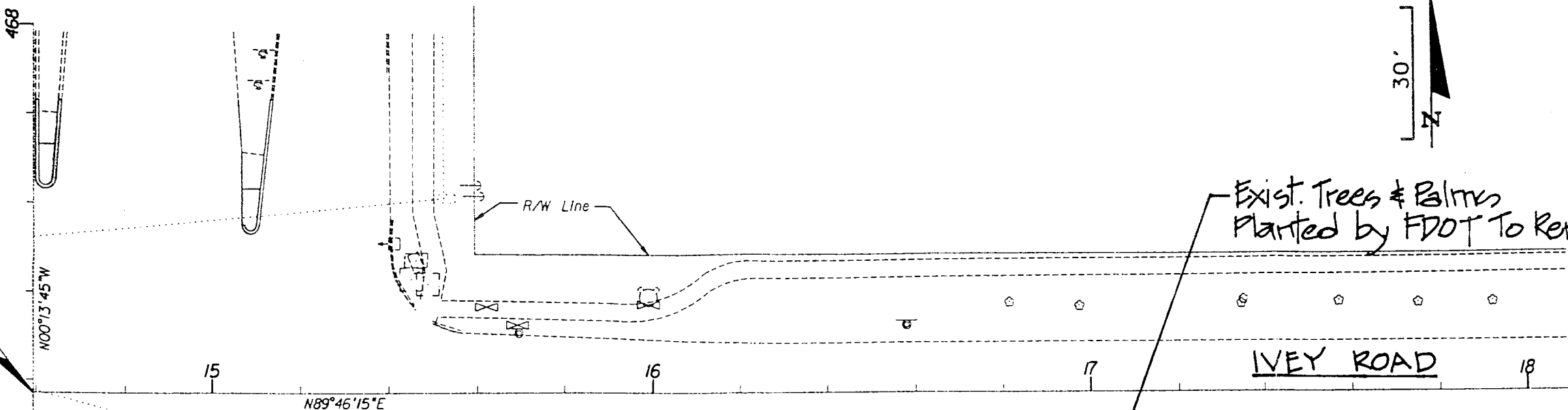




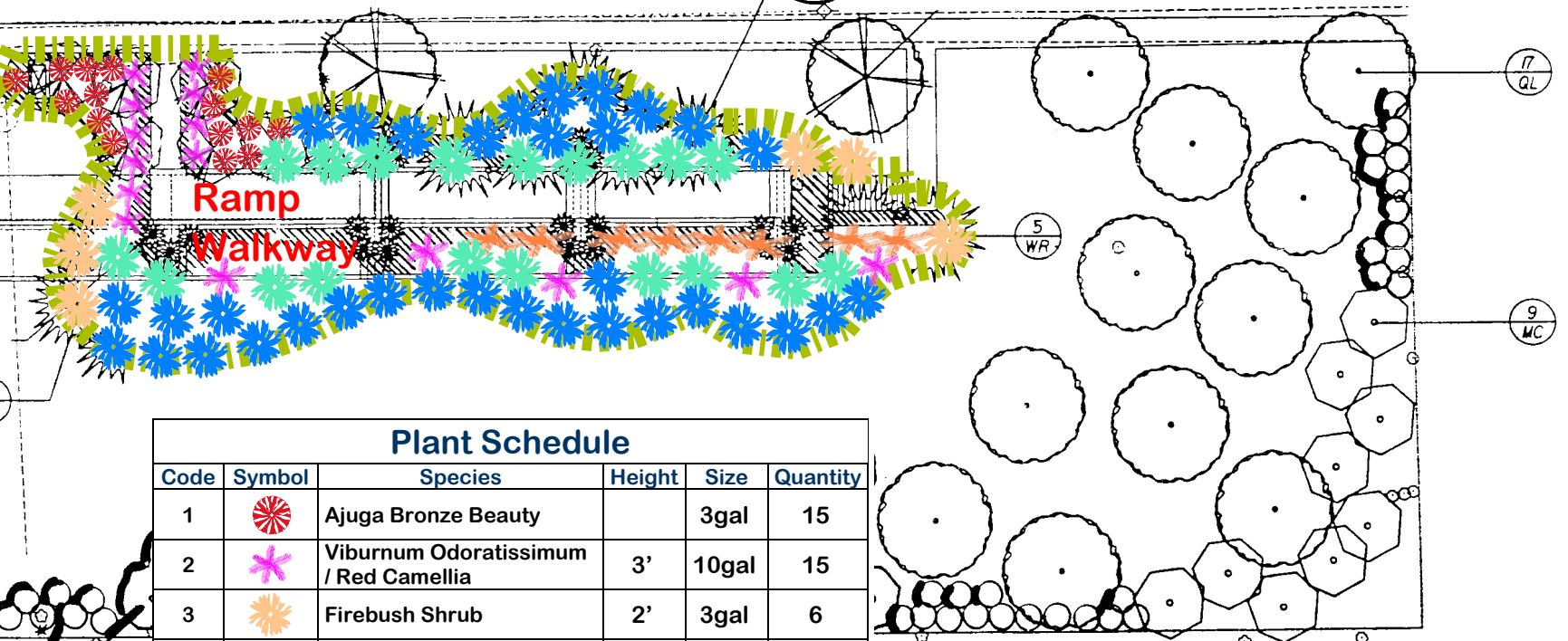
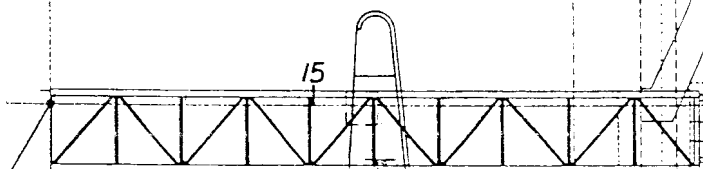
@ SURVEY MEY RD.  
 STA. 14+59.32 =  
 @ SURVEY S.R. 115  
 STA. 467+16.98



Exist. Trees & Palms  
Planted by FDOT To Remain

IVEY ROAD

@ Survey  
 S.R. 115



Plant Schedule					
Code	Symbol	Species	Height	Size	Quantity
1		Ajuga Bronze Beauty		3gal	15
2		Viburnum Odoratissimum / Red Camellia	3'	10gal	15
3		Firebush Shrub	2'	3gal	6
4		Oleander	4'	7gal	19
5		LA Dreamin' Hydrangea	3'	3gal	34
6		Thorny / Crowd-Control to prevent homsteading			8
7		Border: Aztec Grass / Super Blue Europe		1 pint	40/40
8	Not Shown	Weed Barrier / Ground Cover / Mulch			Entire

- NOTES
- Sod Shall Encompass Entire Area Within Parcel Excluding Landscape Areas. 6' Mulched Tree Ring Shall Occur Around Each Tree Outside The Landscape Beds.
  - Sod All Disturbed Areas Within Construction Limits.
  - For Landscape Installation Details See Roadway And Traffic Design Standards Index 544 1 of 1.
  - For Disposition Of Existing Trees See Sheet 13 Of The Roadway Plans.
  - Field Adjust Proposed Trees As Necessary To Accommodate Existing Trees.

@ Bridge Construction  
 Sta. 14+59.32 =  
 S.R. 115 @ Survey  
 Sta. 466+57.98

LANDSCAPE ENHANCEMENT PLAN FOR  
 IVEY RD. PEDESTRIAN OVERPASS @ SR 115  
 Prepared by City of Jacksonville Eng Div.  
 23 Sep 2005

REVISIONS					
DATE	BY	DESCRIPTION	DATE	BY	DESCRIPTION



STATE OF FLORIDA DEPARTMENT OF TRANSPORTATION		
ROAD NO.	COUNTY	FINANCIAL PROJECT ID
115	DUVAL	209691-1-52-01

LANDSCAPE PLAN

SHEET NO.
LD-4